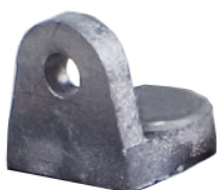


# Rolls



## FLOODED DEEP CYCLE BATTERY

## S2 L16-HC



Series	4000	Warranty	3 Years
Volts	2	BCI	L16
Cells	1	Plates/Cell	49
Terminal Type	LT		
Included Hardware	S/S Hex Cap Screw, Nut, Lock & Flat Washer		
Size & Thread	5/16"-18 x 1-1/2"		

### Charge

Charge Voltage Range	2.45-2.5 V/cell @ 25°C (77°F)
Float Voltage Range	2.25 V/cell @ 25°C (77°F)
Recommended Charge Current Capacity (String)	155 A
Maximum Charge Current (String)	255 A
Self-Discharge Rate	5%-10% per month at 25°C (77°F)

### Capacity

Cold Crank Amps (CCA) 0°F / -17°C	3119
Marine Crank Amps (MCA) 32°F / 0°C	3898
Reserve Capacity (RC @ 25A)	2485 Minutes
Reserve Capacity (RC @ 75A)	653 Minutes

Hour Rate	Capacity / AMP Hour	Current / AMPs
@ 100 Hour Rate	<b>1660 AH</b>	<b>16.60 A</b>
@ 72 Hour Rate	<b>1618 AH</b>	<b>22.47 A</b>
@ 50 Hour Rate	<b>1528 AH</b>	<b>30.56 A</b>
@ 20 Hour Rate	<b>1284 AH</b>	<b>64.20 A</b>
@ 15 Hour Rate	<b>1207 AH</b>	<b>80.46 A</b>
@ 10 Hour Rate	<b>1091 AH</b>	<b>109.14 A</b>
@ 8 Hour Rate	<b>1027 AH</b>	<b>128.40 A</b>
@ 5 Hour Rate	<b>899 AH</b>	<b>179.76 A</b>
@ 1 Hour Rate	<b>462 AH</b>	<b>462.24 A</b>

Ampere hour capacity ratings based on specific gravity of 1.280.  
Reduce capacities 5% for specific gravity of 1.265 and 10% for 1.250.

### Specifications



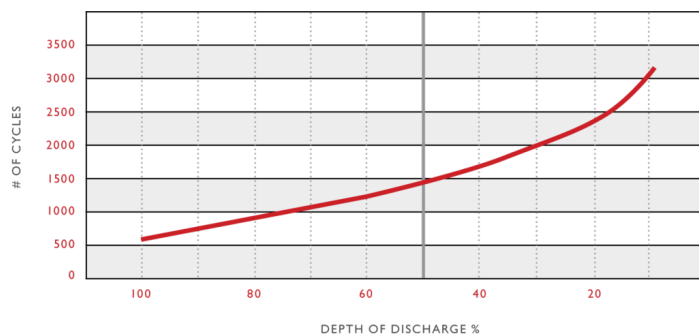
SAI GLOBAL  
ISO 9001  
Quality

Weight	57.5 kg	127 lbs
Length	31.8 cm	12.5"
Width	18.1 cm	7.13"
Height Inc. Term.	43.2 cm	17"

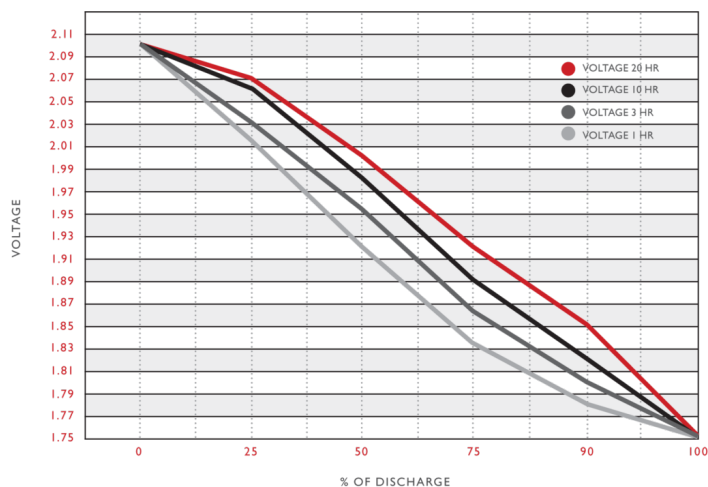
Product measurements & weights are calculated based on sample data. Individual specifications are subject to vary due to the manufacturing process, battery components & electrolyte levels.

Electrolyte Reserve	57 mm	2.25"
Container	High Density Polypropylene	
Cover	High Density Polypropylene	
Handles	Rope / Plastic Handle	

### Cycle Life vs. Depth of Discharge



### Voltage vs. Depth of Discharge



Rev.#1 | March 2019